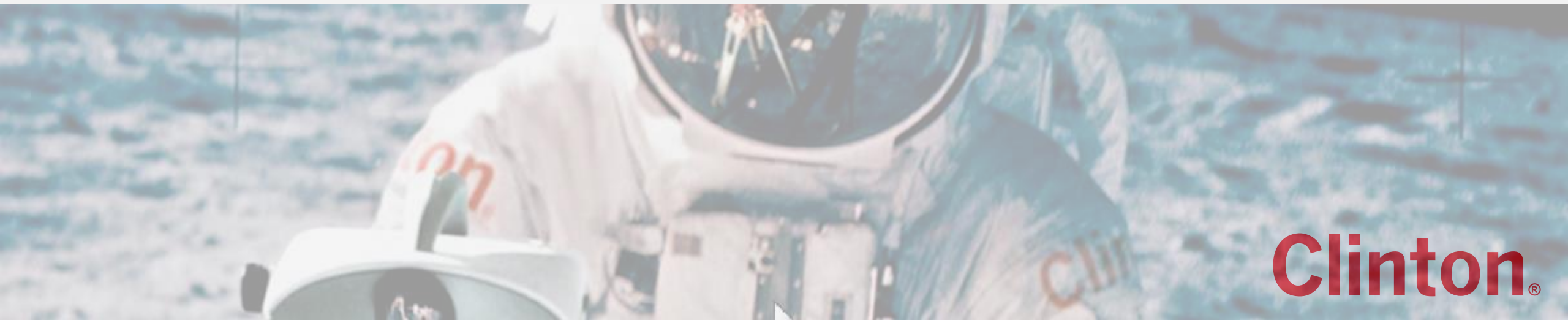


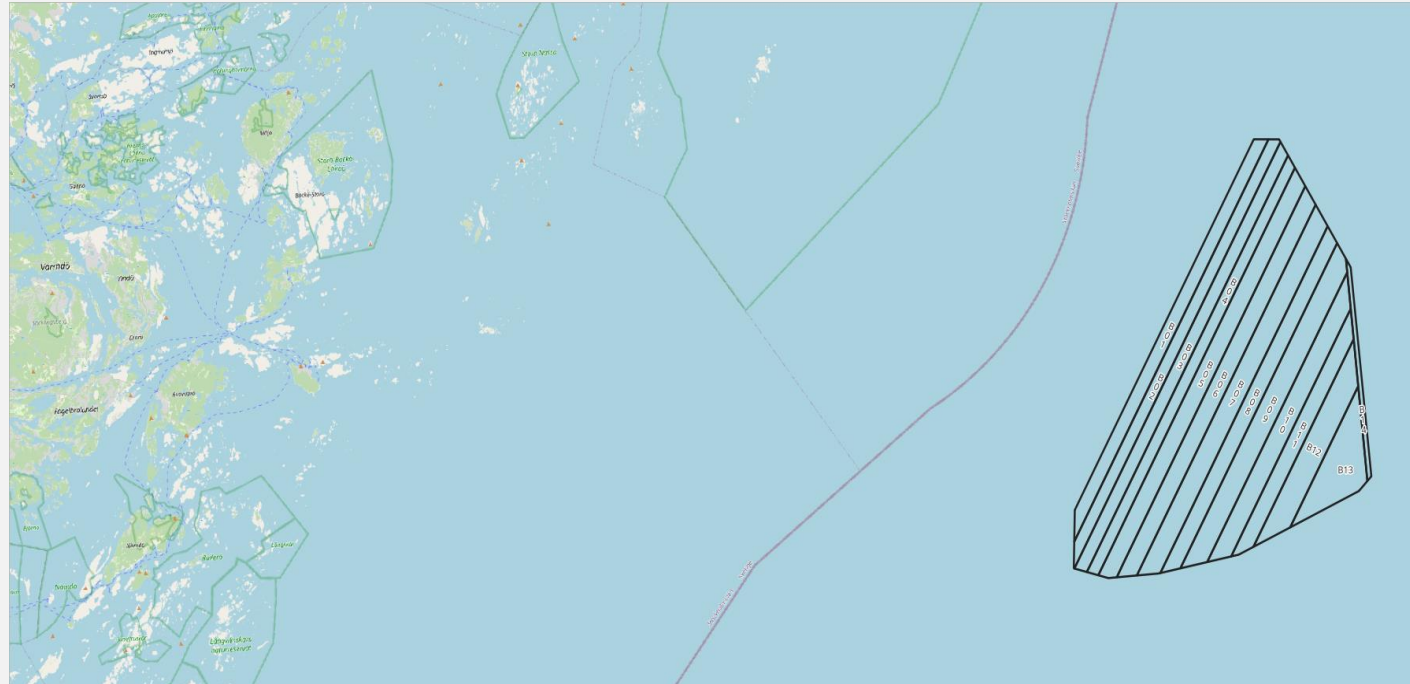
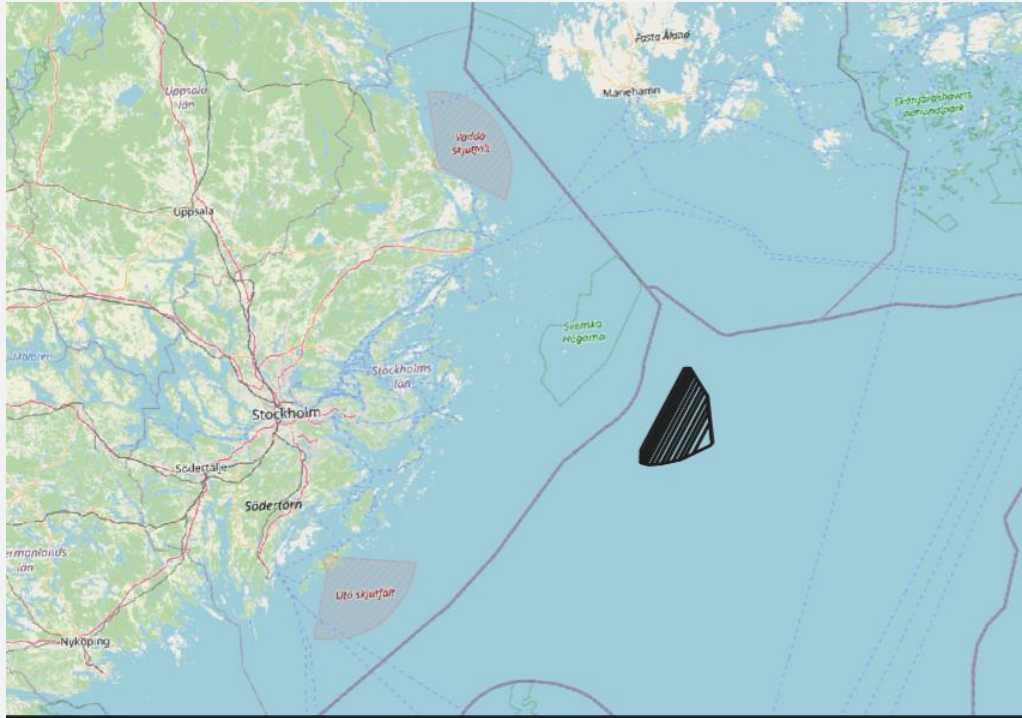
Notice to Mariners

Geophysical survey, East of Södertörn area, Baltic Sea



Clinton®

- ❑ **VESSEL:** M/V NORTHERN STORM
- ❑ **MANEUVERABILITY:** LIMITED
- ❑ **EQUIPMENT:** Hull mounted & towed systems
- ❑ **PERIOD:** 17th of October – 28 th of February (partially during this period, not continuous operation)
- ❑ **PURPOSE:** Geophysical survey for a potential wind farm



M/V Northern Storm

Call signs: MISA7

Bridge (VOIP): +46 31 320 10 61

Email: master-northernstorm@clinton.se

Contact person at Clinton Marine Survey:

Martin Wikmar +46 708 79 90 20

Philip Ljungström +46 708 79 90 26



Clinton®